

诚信 **赢** 天下  
Integrity to win the world



航金丝网  
HANGJIN WIRE MESH

河北航金丝网制品有限公司  
Hebei Hangjin Wire Mesh Products CO.,LTD

地址: 安平县城东开发区

电话: 0318-7523276

传真: 0318-7535515

手机: 18830811988 15512962966

网址: [www.hbhangjin.com](http://www.hbhangjin.com) [www.hjmesh.com](http://www.hjmesh.com)

邮箱: [1841197789@qq.com](mailto:1841197789@qq.com) [Sales@hjmesh.com](mailto:Sales@hjmesh.com)



河北航金丝网制品有限公司  
HEBEI HANGJIN WIRE MESH PRODUCTS CO.,LTD

# >>>>>> 企业简介 Brief Introduction



河北航金丝网制品有限公司(原安平县蓝天钢格板厂)位于“中国丝网之乡”-河北省安平县，是一家新型现代化生产、销售、冷【热】镀锌、一站式钢格板企业。

专业生产热镀锌钢格栅板、玻璃格栅板、热镀锌钢格板、吊顶钢格板、防滑钢格板、平台钢格栅板、水沟盖板、楼梯踏步板、围栏格栅板、插接钢格板、防风抑尘网、矿筛网、护栏网、钢板网等系列产品。

我们还可以根据用户的需要，生产大型重承载钢格板、特殊钢格板等产品。对于客户要求的不同工作环境，承载力、跨度、形状和颜色以及成本造价，提供相应的设计方案及成本控制。

我们以先进的管理理念，科学系统的管理方法，灵活的经营机制，持续不断的技术创新，努力发挥行业优势。

在短短几年中，我们本着踏踏实实做事，本本分分做人的经营原则，一步一个脚印发展到今天，钢格板日产量达到500平方米的生产规模，成为华北地区钢格板生产企业之一。

多年来，我们“以诚立业”，“以质兴业”。我们会以一颗真诚的心来回报客户，共创美好明天。



# 目录 Contents

钢格板 \_\_\_\_\_ 01-14  
Steel Grating

护栏网 \_\_\_\_\_ 15-26  
Fence Netting

冲孔网 \_\_\_\_\_ 27-28  
Perforated Mesh

防风抑尘网 \_\_\_\_\_ 29-30  
Windbreak Inhibitory Dust Mesh

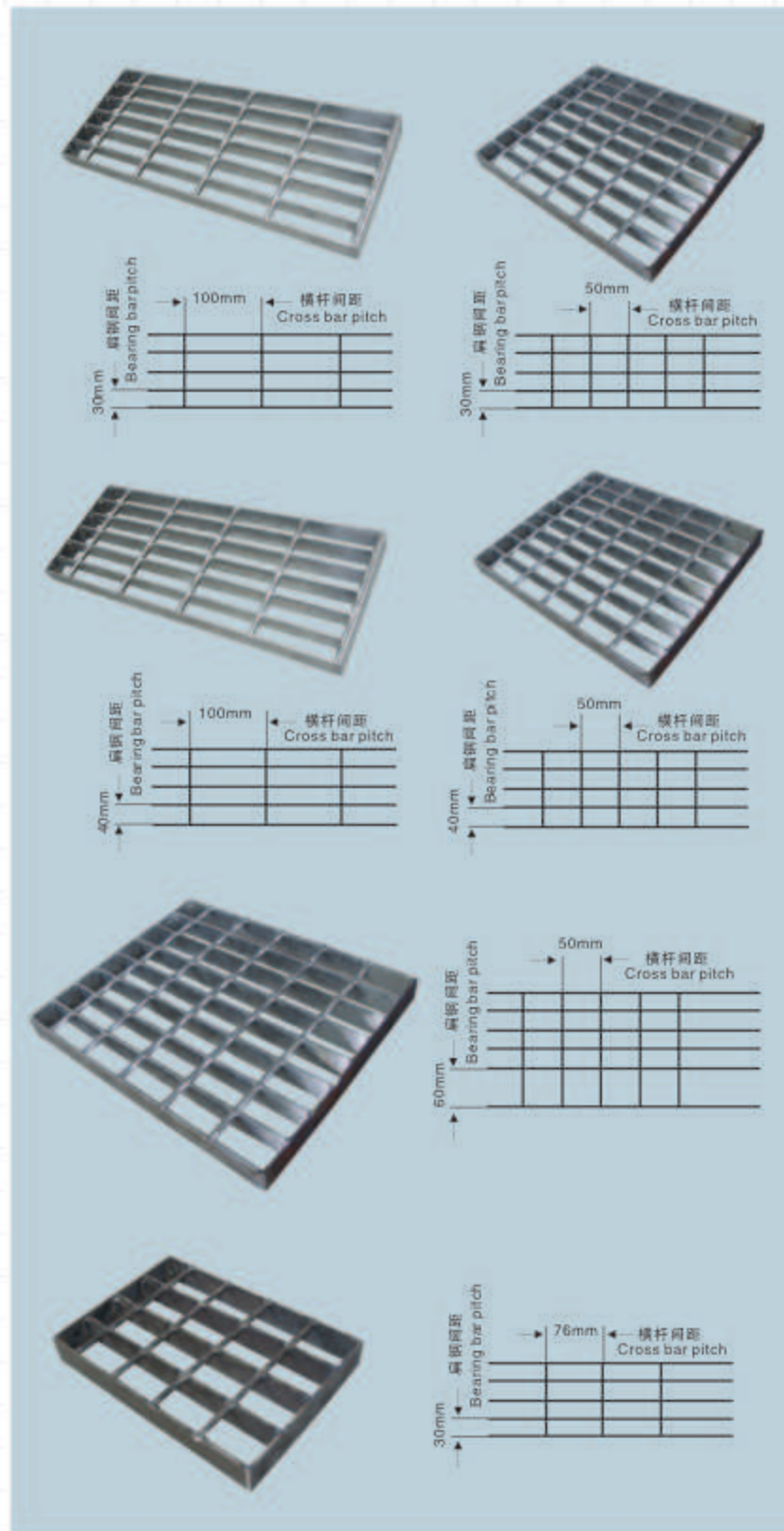
勾花网 \_\_\_\_\_ 31-32  
Chin Link Netting

石笼网 \_\_\_\_\_ 33-34  
Gabion Box

刺绳系列 \_\_\_\_\_ 35-36  
Barbed Wire Series

钢板网 \_\_\_\_\_ 37-38  
Expanded Plate Mesh

## 钢格板常用规格 Steel Grating Common Specifications



扁钢间距为30mm的钢格板为工业领域用途最广泛的品种。在常用钢格板的系列中，对表面冲击具有最强的抵抗力。

The grating that the pitch between bearing bars is 30mm, is most widely used type in industrial field. Among normal types, it has the strongest resistance to surface lash.

扁钢间距为40mm的钢格板为最经济、最轻便的品种，在跨距较小的场合下，是最理想的选择。

The grating that the pitch between bearing bar is 40mm, is the most economical and lightest type. It is the best choice for you on occasions that the clear span is small.

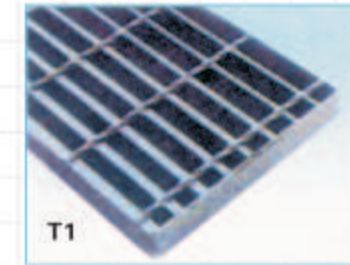
扁钢间距为60mm，横杆间距为50mm的钢格板是专为采矿业的应用而开发的品种，它解决了矿物溅落在板面上的难题，常指定用于采矿业的加工厂。

The grating that the pitch between bearing bar is 60mm and the pitch between cross bars is 50mm is developed specially for mining industry. It solves the problem of mineral splash on the plate. So it is often appointed to use in processing works of mining industry.

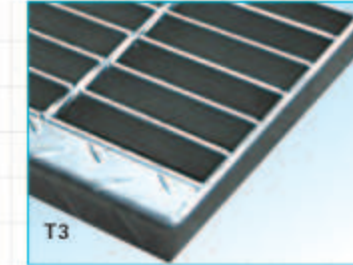
扁钢间距为30mm，横杆间距为76mm组合的钢格板是目前国内外最常见的一种，适用于各种场合，特别是走道，参观平台等。

The grating with the pitch of 30mm between bearing bars and of 76mm between cross bars is the most popular type used home and abroad. It is proper for many applications such as walkways, platforms, etc.

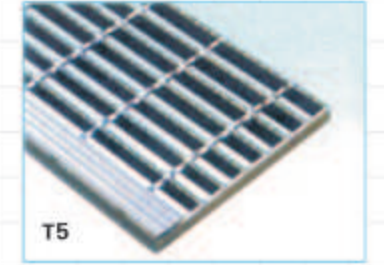
## 踏步板 Type of Stair Tread



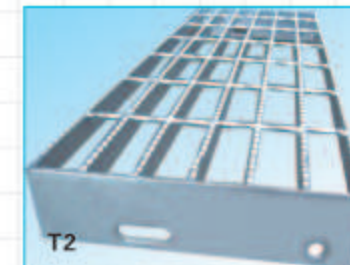
T1 焊接固定 无前护板  
Welded fixing Without nosing



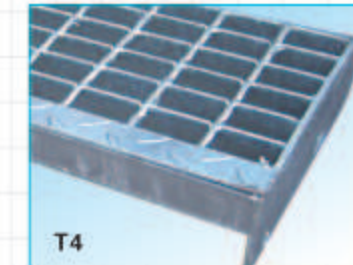
T3 焊接固定 花纹前护板  
Welded fixing Checkered plate nosing



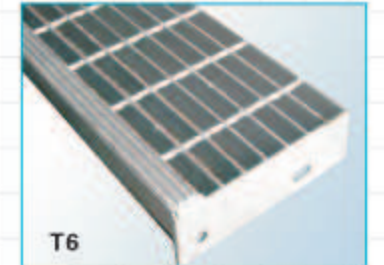
T5 焊接固定 条钢前护板  
Welded fixing Bar steel nosing



T2 螺栓固定 无前护板  
Bolted fixing Without nosing



T4 螺栓固定 花纹前护板  
Bolted fixing Checkered plate nosing



T6 螺栓固定 条钢前护板  
Bolted fixing Bar steel nosing

## 踏步板数据型号

### Stairtread data type

#### 荐用宽度(mm) Recommended Width

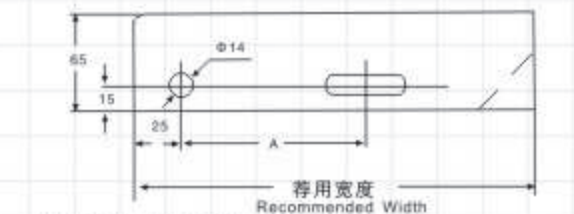
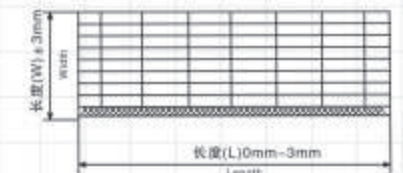
荐用宽度(mm)	125	155	185	215	245	275	305
T1-T6 扁钢间距 30mm Bearing bars at 30mm pitch							
T1-T2 T5-T6 扁钢间距 40mm Bearing bars at 40mm pitch	125	165	—	205	245	285	325
T3-T4 扁钢间距 40mm Bearing bars at 40mm pitch	115	155	—	195	235	275	315
T1-T2 T5-T6 扁钢间距 60mm Bearing bars at 60mm pitch	—	—	185	—	245	—	305
T3-T4 扁钢间距 60mm Bearing bars at 60mm pitch	—	155	—	215	—	275	—
中心距 (A) spacing	45	75	75	100	100	150	150

#### 最大长度(mm) Maximum Length

扁钢规格	25 × 3	25 × 5	32 × 5	40 × 5
扁钢间距 30mm				
Bearing bars at 30mm pitch	550	900	1300	1600
扁钢间距 40mm				
Bearing bars at 40mm pitch	450	750	1200	1500
扁钢间距 60mm				
Bearing bars at 60mm pitch	—	550	850	1350

说明：踏步板可采用任何型号钢格板制造，尺寸亦可采用非标准规格。  
Notes: Stairtread may be made of any types of grating, the size may be up to non-standard specification.

## 踏步板公差 Stairtread tolerance

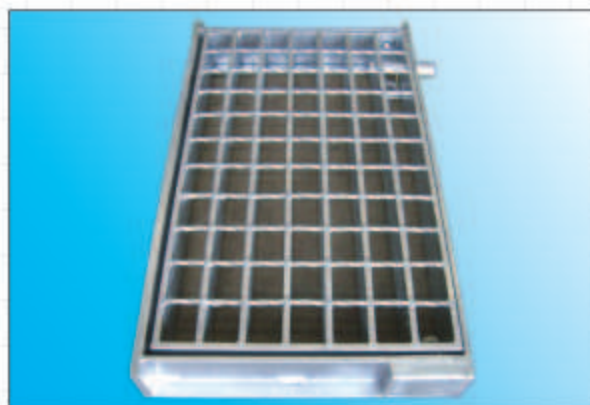
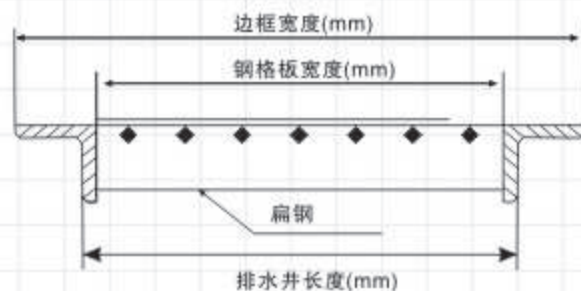
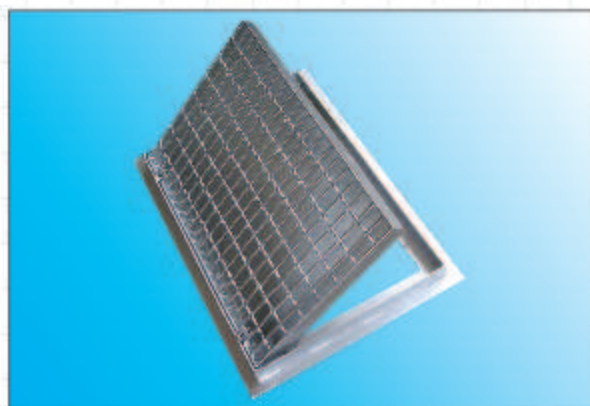
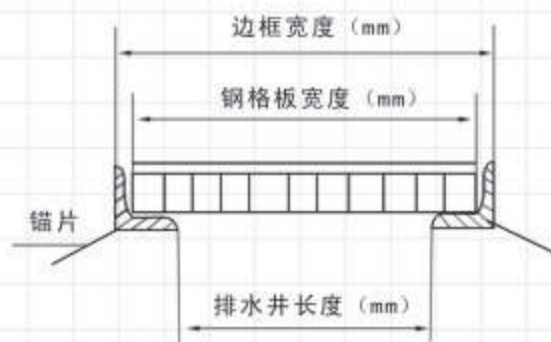
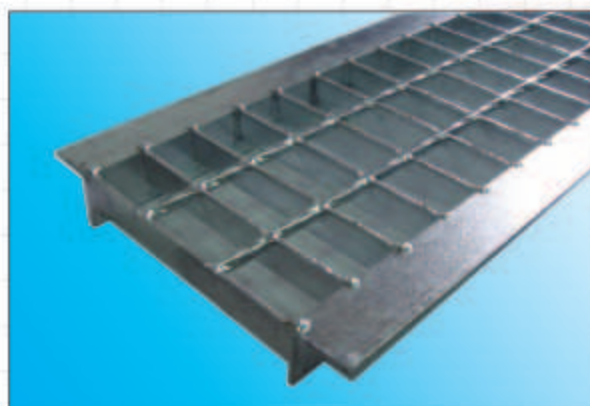
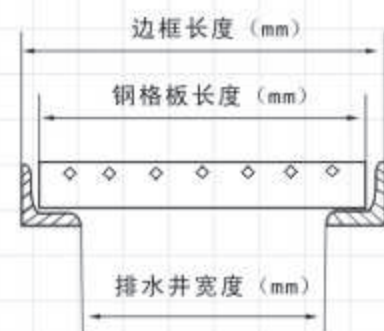


## 沟盖板 Trench Cover

排水井盖及排水沟盖采用钢格板制造，具有多种型号可供选择以适合不同的荷载和跨距。

该产品施工简单，承载好，抗冲击，排水量大，表面采用热浸锌处理，美观耐用，是目前国际上广泛采用的唯一能代替铸铁盖板的产品。市政井盖板用铰链连接，具有开启方便、防盗的优点。广泛应用于市政道路、园林设施、学校、体育场、住宅小区、厂区及码头等领域。

本公司也可按用户要求根据不同载荷，不同跨距制造任意尺寸和形状的排水沟盖，其承载能力取决于所选用的钢格板的承载能力，可按实际需要选用。



## 复合钢格板 Brand Compound Steel Grating

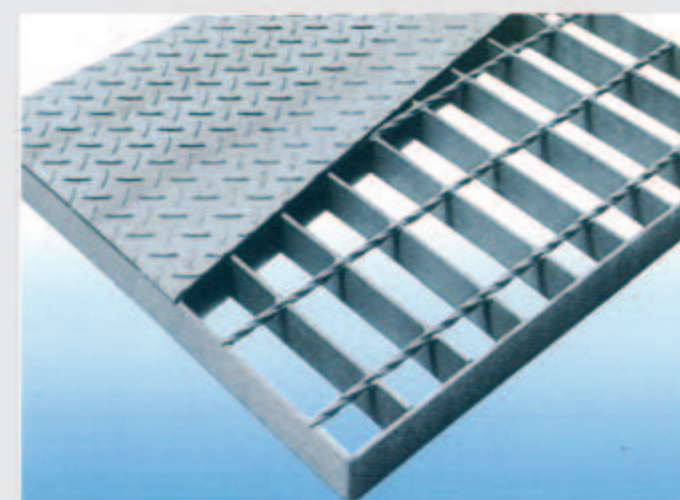
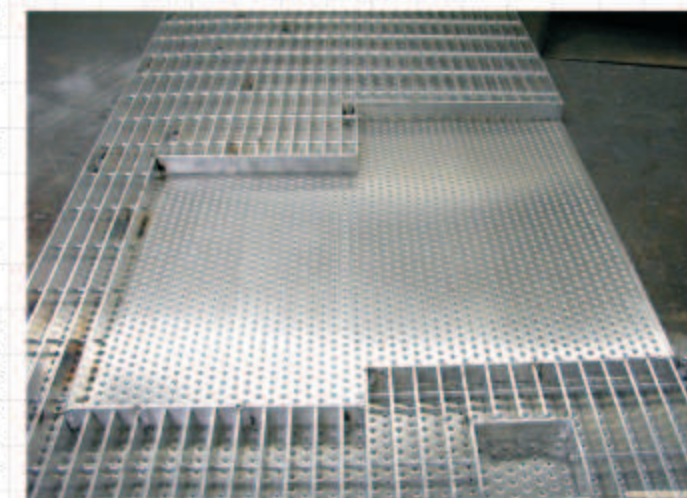
复合钢格板是由具有一定横跨承载能力的钢格板及密封表面的花纹钢板构成的一种产品。

复合钢格板经热浸锌处理后，因花纹钢板和钢板网的不同会产生翘曲变形，尤其是选用较大型号的钢格板，校正比较困难，请注意选型。

复合钢格板常用扁钢间距为60mm的钢格板作底板，也可采用扁钢间距为30mm或40mm的钢格板作底板，最常用的是由G323/40/100、G253/30/100或G323/60/100的钢格板作底板，常用厚3mm的花纹钢板，也可采用厚4mm、5mm、6mm的花纹钢板。

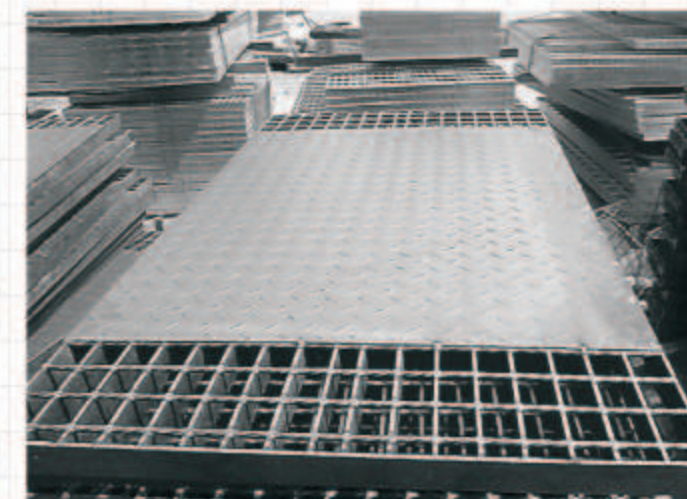
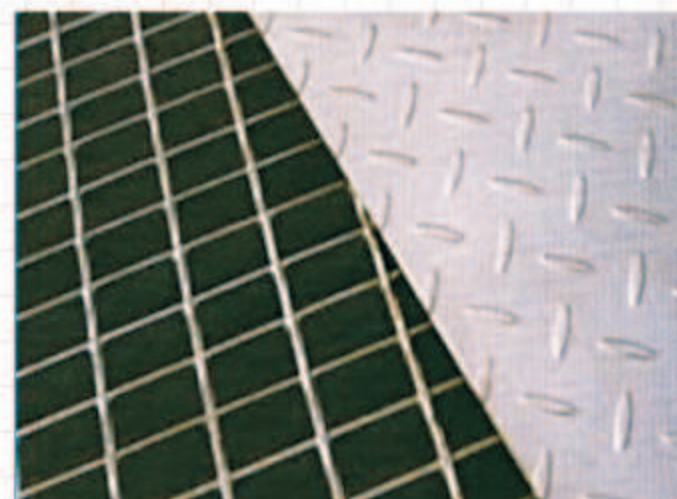
Brand Compound Steel Grating is a product which combines grating of good horizontal bearing capacity checkered plate.

After being galvanized, the compound grating may bend upwards, especially for large type grating. It is very difficult to rectify, so you should pay special attention while ordering compound grating is normally made up the gratings with bearing bars of the pitch 30, and 40mm as base part and the checkered plate of the pitch 3mm, 4mm, 5mm and 6mm as cover. The most popular gratings as base parts are the types of G323/40/100, G253/30/100 and G323/60/100.



HF3(G323/40/100)

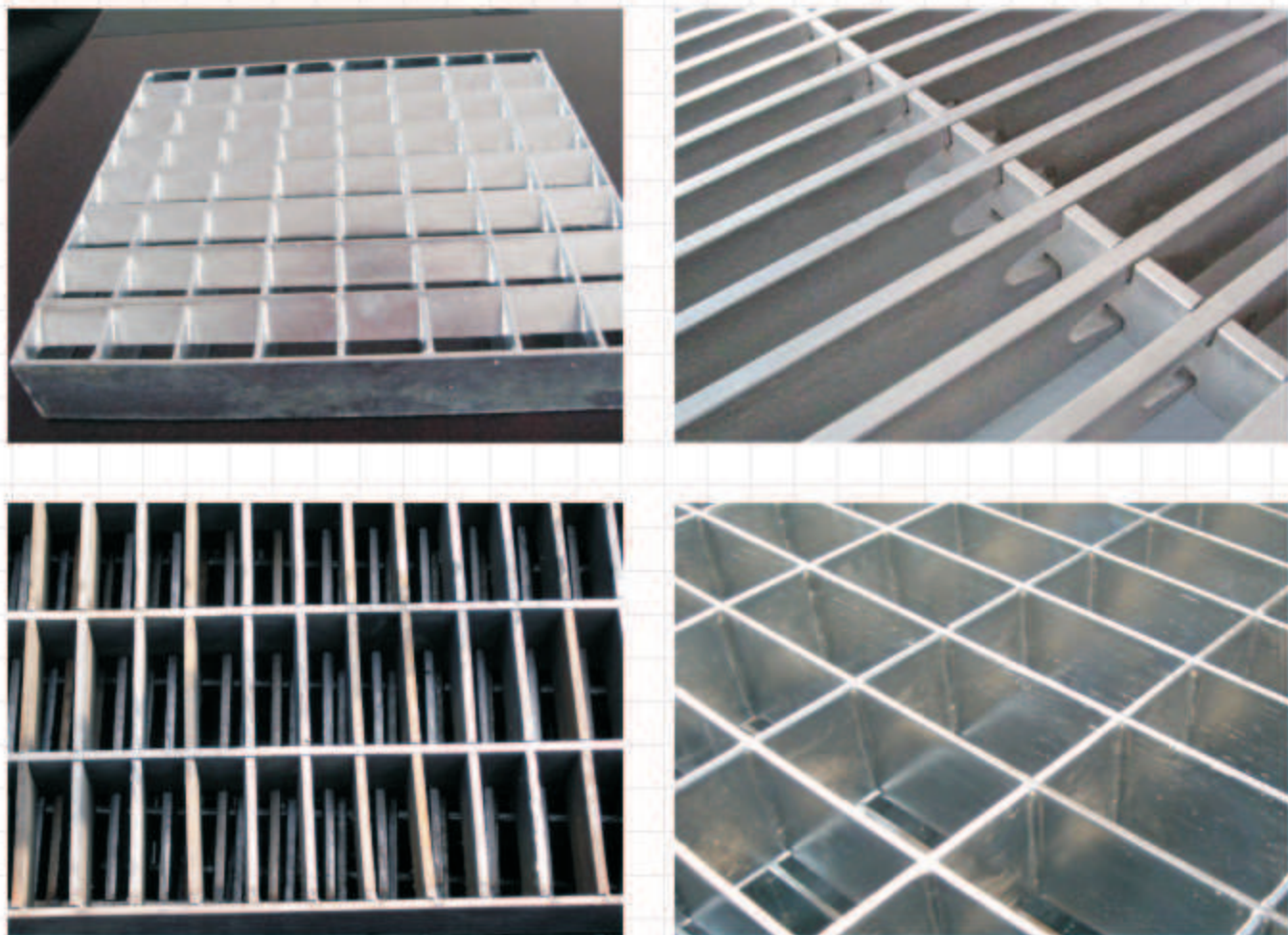
钢格板型号  
TYPE OF GRATINGS  
花纹钢板厚度  
THICKNESS OF CHECKERED PLATE  
复合钢格板符号  
SYMBOL OF COMPOUND GRATING



## 插接钢格板 Plug Steel Grating

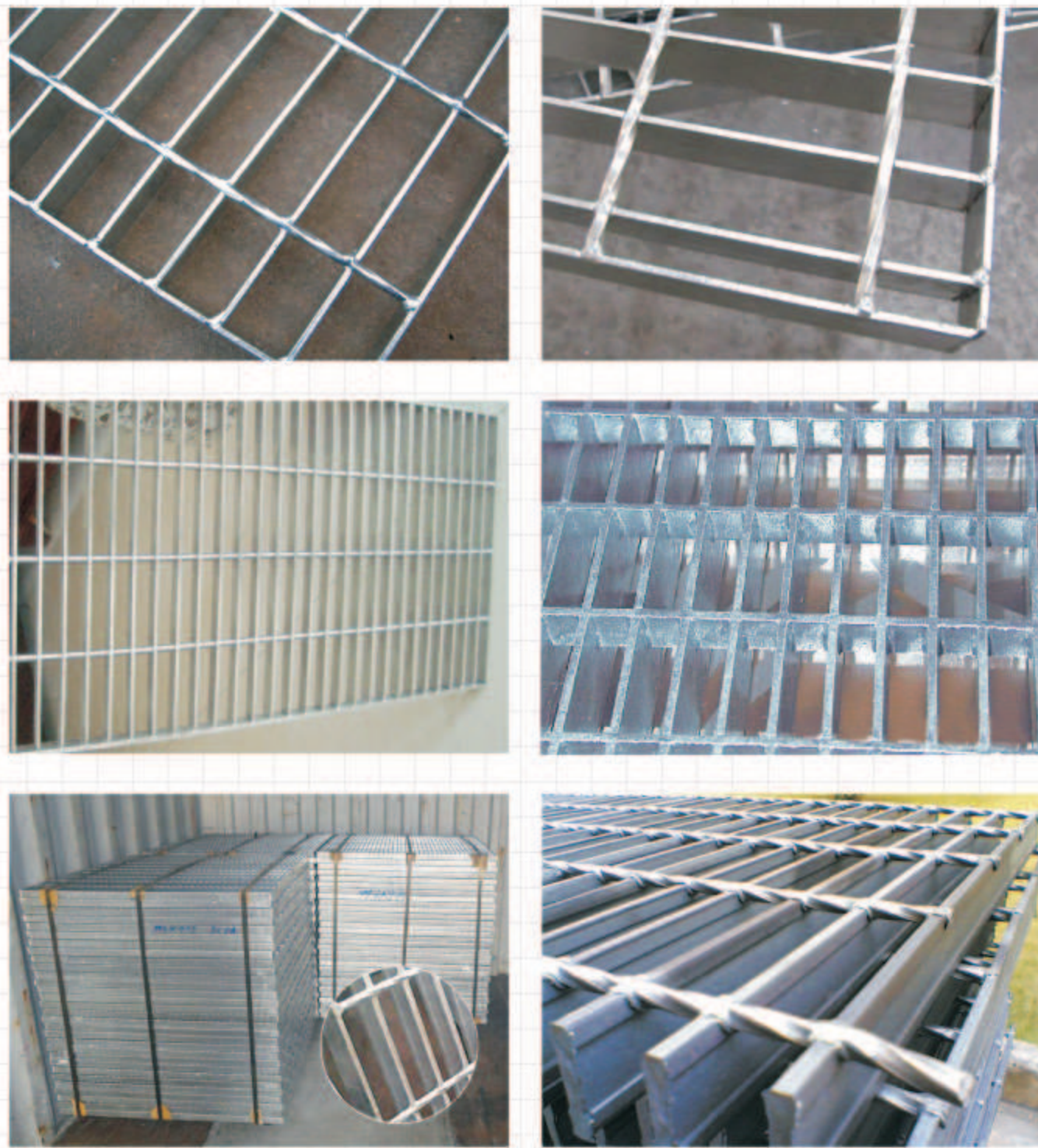
插接钢格板是一种承载能力较大的钢格板产品，具备焊接钢格板的一切优点。它由一定尺寸的扁钢经过开槽（孔），经纬对差、焊接、精整等工序制造而成，其特点设计科学、结构合理、平整美观、免维护、承载力巨大等，广泛应用于承载力工业平台，安全系数较大，走道观光台、水沟、盖板、踏步板、吊顶及商用建筑装潢，材质可按客户要求选择，形状尺寸可根据现场施工要求定做。颜色可按客户要求选择。

Plug steel grating is specially utilized in higher strength work condition maintaining the advantages of welded steel grating. The plug-type grating is fabricated by bearing flat bar and shaft through the following processes, such as notching, plugging, welding, finishing to create form. With the properties of scientific design, solid structure, beautiful view, free maintenance and high strength the plug grating can be widely applied in various fields including high-weight industrial platform, aisle platform, raceway, cover plate, step plate, ceiling, indoor and outdoor decorations. We can provide a variety of plug gratings in accordance with the requirements of our clients, such as material properties, structure, structure, size and color.



## 不锈钢钢格板 Stainless Steel Grating

不锈钢钢格板广泛应用于食品加工、装饰装潢以及防腐性能要求更高的场所。材质可按客户要求提供，普通材质304、316、316L等。表面处理可选择喷砂、酸洗抛白、电解抛光等，其性能经久耐用、美观漂亮。

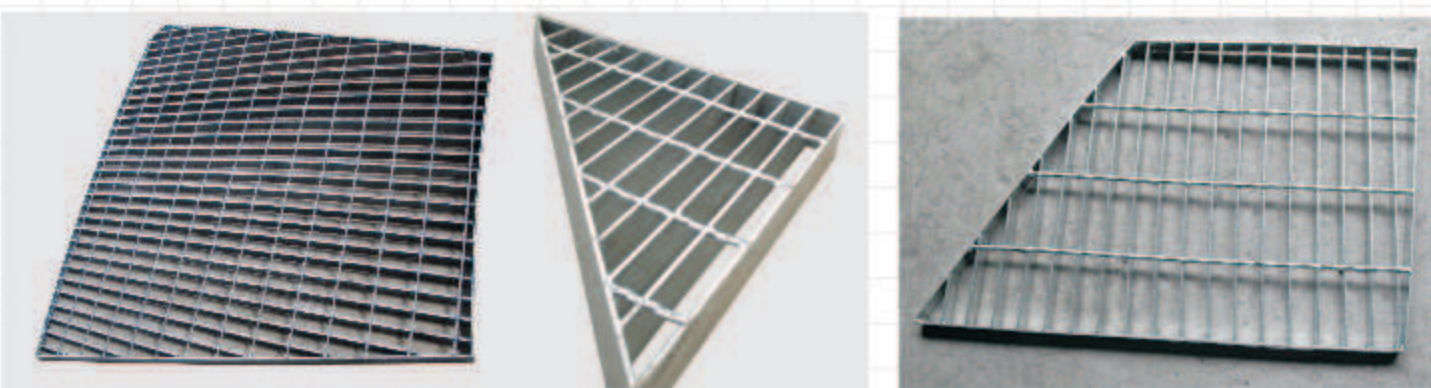
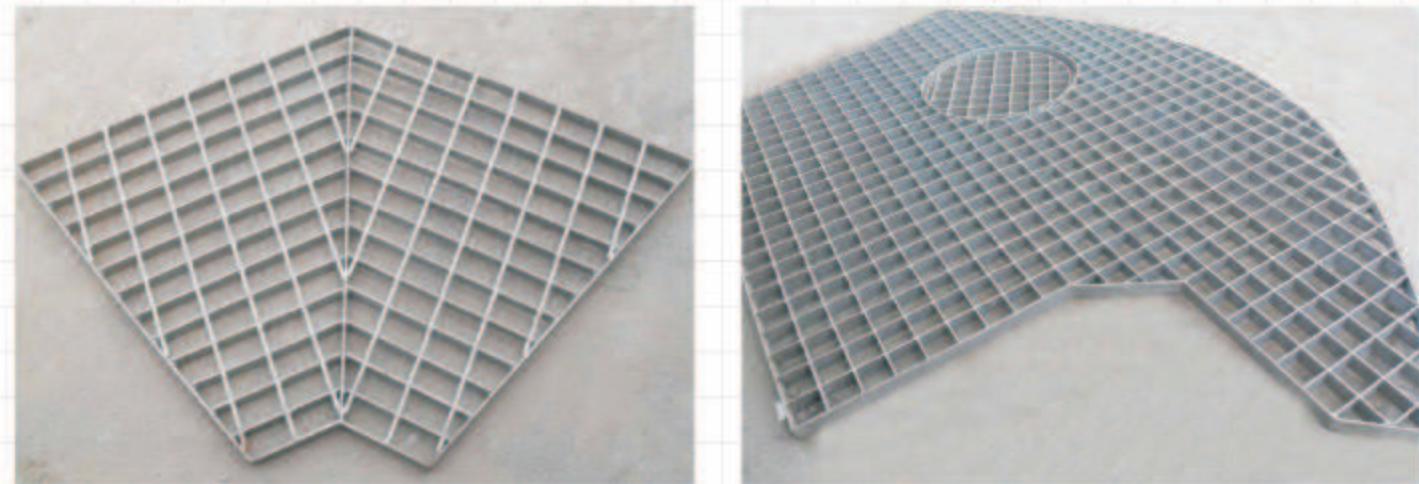


## 异型钢格板 Shaped Steel Grating



异型钢格板是根据客户需求制作出各种不规则形状的钢格板、平台板，我公司专业致力于异型钢格板的制作及安装，本公司拥有先进的CAD电脑辅助设计系统，为您设计并制作。我公司长期供应各种规格异型钢格板。

特点为：拼装为圆形，梯形，半圆形，扇形；牢固的网格焊接使其具有高承载，结构轻，便于吊装等特点；外形美观，经久耐用。可根据用户要求定做，代客户设计安装。



## 钢格板的标记、质量标准及允许偏差 Size, Dimension and Tolerance

### 质量标准 Quality standards

	钢格板标准 standard for steel grid	钢材标准 standard for steel material	热浸锌标准 standard for hot dipped galvanization
中国 China	YB/T4001.1-2007	GB700-88	GB/T1392-92
美国 USA	ANSI/NAAMM(MBG531-88)	ASTM(A36)	ASTM(A123)
英国 UK	BS4592-1987	BS4360(43A)	BS729
澳大利亚 Australia	AS1657-1985	As3679	As1650

### 钢格板标记 Symbol of steel grating



注：

- 扁钢中心间距有15、22、25、30、32.5、34、40、50、60、80、90mm等，推荐采用25、30、34、40mm。
- 横杆中心间距，从24-200mm任意选用，推荐采用50、76、100mm。
- 扁钢为外形标记：  
F-表示为平面型扁钢（在标记中可省略）；  
S-表示为齿形扁钢；  
I-表示为截面为“I”型扁钢。
- 表面处理标记：  
G-表示涂漆；  
U-表示表面不作处理。

Note:

- Bearing bar pitches may be 15 22. 25. 30. 32.5. 34.40. 50. 60. 80. 90mm, of which 25. 30. 34 and 40mm are recommended.
- Cross bar pitches may be 24-200mm, of which 50mm, 76mm and 100mm are recommended.
- Sign of the shape of bearing bars:  
F-Plain style (may be omitted in the symbol of steel grating)  
S-Serrated style  
I-I-section style
- Sign of surface-treatment:  
G-Hot galvanizing (may be omitted in the symbol of steel grating)  
P-Painted  
U-Untreated

### 允许偏差 Allow deviation

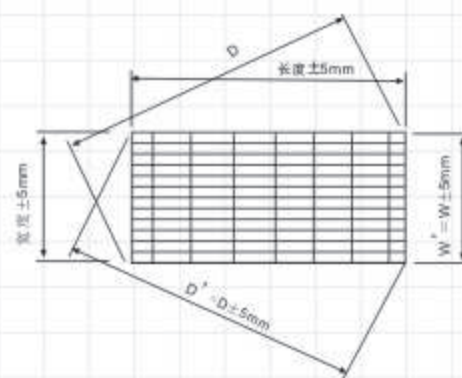


图1 钢格板外形尺寸公差

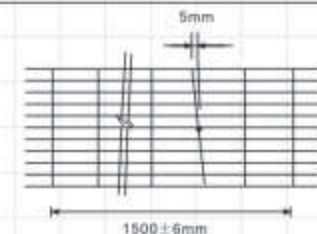


图2 横杆间距和垂直偏差

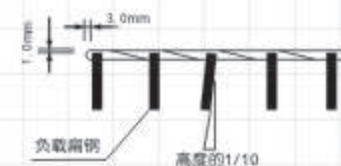


图3 负载扁钢/横杆的偏差

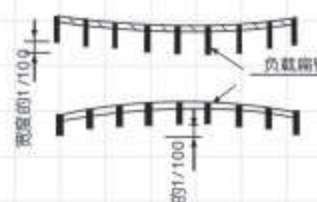


图4 横向弯曲



图5 纵向弯曲

## 钢格板表面处理 Surface Process of Gratings

### 热浸镀锌 Hot-dipped Galvanizing

热浸镀锌一般在包边工作完成后进行。当负载扁钢厚度不小于5mm时,镀锌后的平均锌层重量不小于610g/m<sup>2</sup>;当负载扁钢厚度小于5mm时,镀锌后的平均锌层重量不小于460g/m<sup>2</sup>,镀锌后质量及要求应符合GB/T13912规定。

Normally, hot-dipped galvanizing will be carried out after end welding process. When the thickness of bearing bars is not less than 5mm, the weight of average zinc layer will not be less than 610g/m<sup>2</sup>. When the thickness of bearing bars is less than 5mm, the weight of average zinc layer will not be less than 460g/m<sup>2</sup>. The quality and requirements after hot-dipped galvanizing are according to the standards of GB/T13912.

### 涂漆 Lacquering

用喷涂、刷涂或浸渍的方法获得保护层。

Gain protection layer through the ways of spraying, brushing and soaking.

### 防酸碱腐蚀能力 Anti-acid and alkali corrosion capacity

在PH6至PH12.5范围内,锌层表面形成稳定的保护膜,耐腐蚀性能好。

In the range of PH6 to PH12.5, a stable protective film will be formed on the zinc surface. It has good anti-corrosive property.

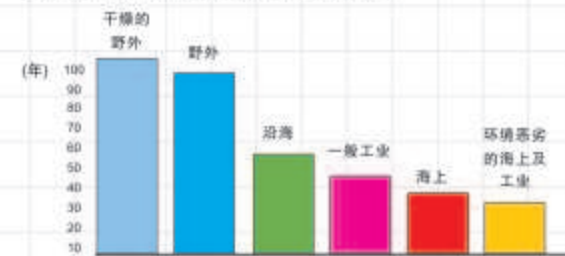
### 热浸镀锌的使用寿命 Service life of hot galvanizing

锌层厚度100 μm, 产品在各种环境中的预计寿命

Thickness of zinc coated is 100 μm, the anticipated life of products in various circumstances.

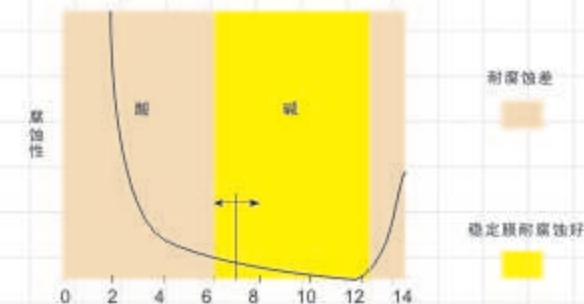
### 使用寿命

锌层厚度100 μm, 产品在各种环境中的预计寿命



### 防酸碱腐蚀能力

在PH6至PH12.5范围内,锌层表面形成稳定的保护膜,而腐蚀性能好。



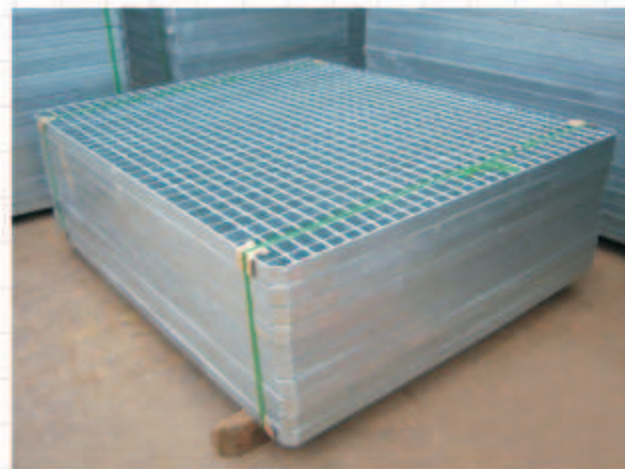
## 钢格板包装标准 Packing Conditions of Steel Grating

一般采用捆叠式, 上部和底部各有两条方木, 中间用六条或四条M10的长螺杆穿格孔洞而紧固, 适用于叉车和绳吊的装卸。

注: 经供需双方协商, 可按需方要求进行包装。

Normally packed in piling up ways with two pieces of square wood on both upper and bottom sides. There are four or six pieces of M10 long bolt penetrating the gratings and screwing together. It is suitable for loading and unloading by fork-lift and crane.

Note: We can pack as per the requirement of customers.



## 钢格板的安装方法 Installation of steel grating

1、钢格板的安装可用焊接和安装夹两种方法。焊接固定适用于永久不需拆卸的部位, 如设备周围平台, 而采用安装夹具有不破坏锌层及拆卸方便的特点。

2、安装夹适用于各种系列的钢格板, 由上卡、下卡和M10内六角圆柱头螺栓组成。

3、焊接固定的方法是: 在钢格板每个角第一根扁钢上, 焊缝长不小于20mm, 高不小于3mm的焊角。

4、采用安装夹固定, 每块板至少采用四套安装夹, 对跨距较大的板块最好在可利用的支撑物上多安装几个。

5、为满足客户的要求, 可提供不锈钢安装夹。

6、在订购安装夹时, 请注明所需夹子的类型、数量和材料。

1. There are two ways of installation for grating. One way is by welding and the other is by installation fastener. The welding method is suitable for those parts which will be fixed forever, such as platforms for equipments, while

the method by installation fastener has the properties of easy to assemble and disassemble and of preventing destroying the zinclayer.

2. Installation fastener is suitable for all types of gratings. It is made of up-fastener, down-fastener and inside turret cylinder bolt M10.

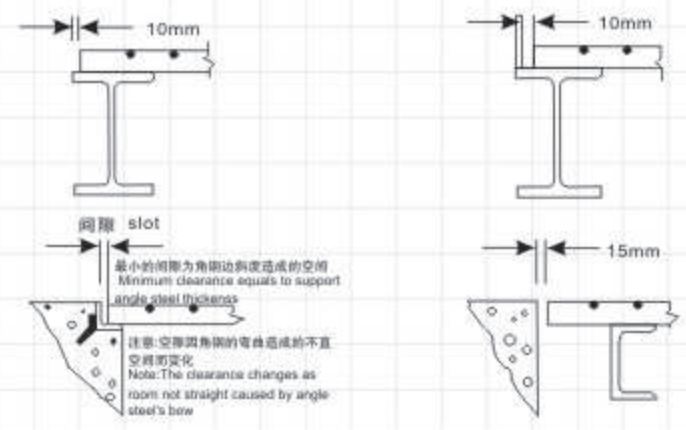
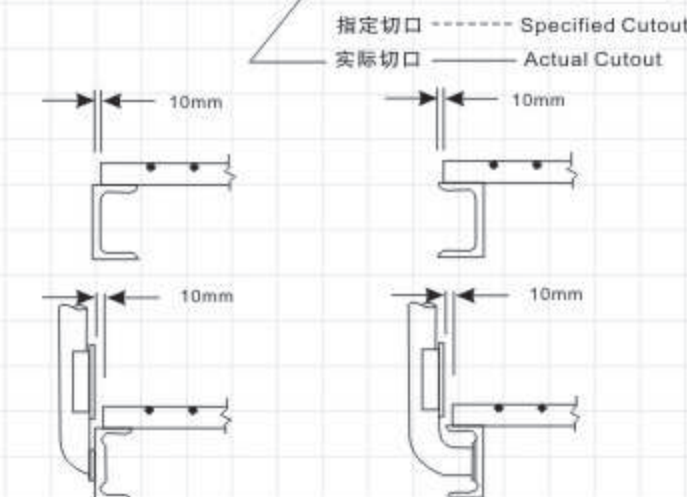
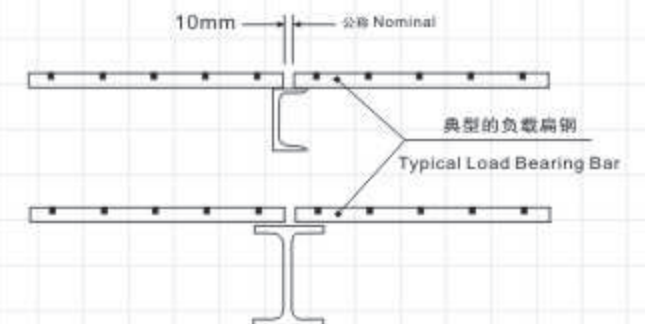
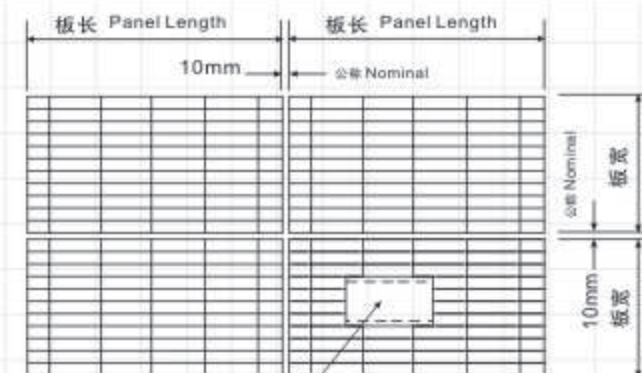
3. Welding method is angle welding at the first bearing bar of every corners on the grating. Welding seam of which is not less than 20mm in length and less than 3mm in height.

4. It at least needs four sets of installation fasteners on every grating to fix. You had better install more fasteners on the supportable construction when the span is larger.

5. We can supply stainless steel installation fastener to satisfy our customer.

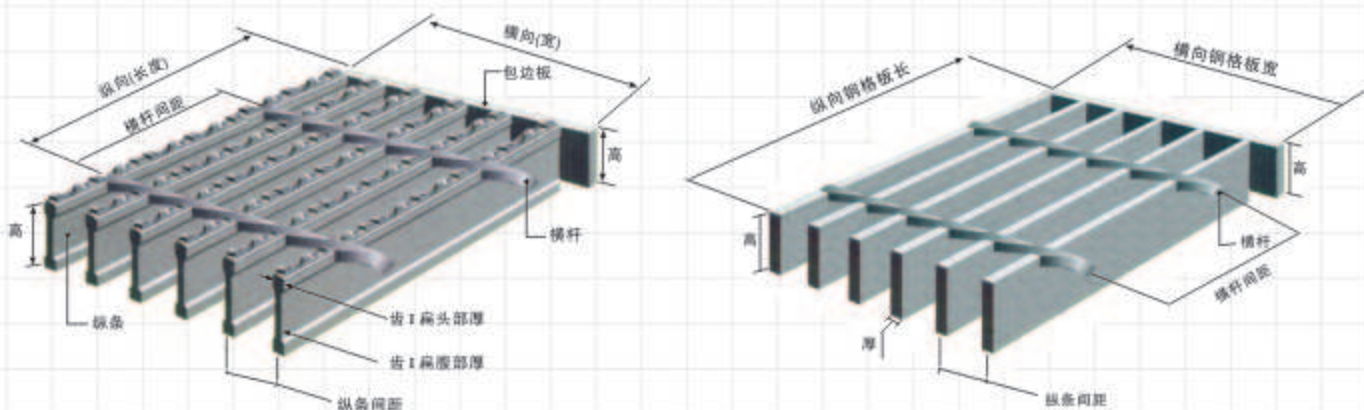
6. Please indicate clearly the type, quantity and material when you purchase installation fastener.

### 安装间隙 The Installation Gap





## 钢格板产品构造图 Steel Grating Product Diagram



钢格板又名钢格栅板，因地域性差异，北方人习惯叫钢格板，南方人习惯叫钢格栅板。

我国钢格板的生产执行YB/T4001.1-2007标准。

钢格板是扁钢按照一定间距和横杆进行交叉排列，焊接成中间带有方形格子的钢铁制品。

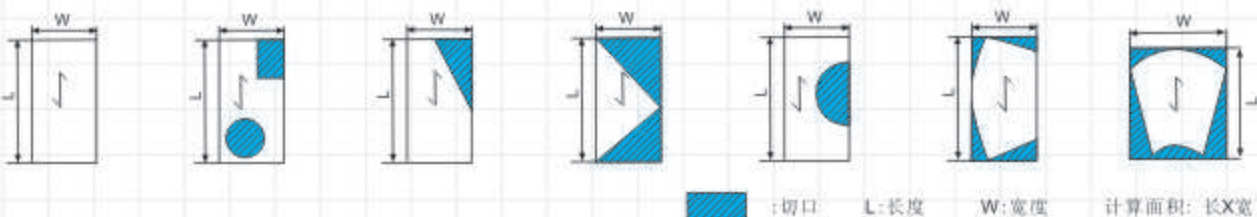
钢格板的制做方式有机器压焊和手工焊接两种，各有优缺点。

- 1、压焊对熔强度较小，外形尺寸制约性较大。在生产过程中电流大，容易出现熔断，造成横杆断裂。
- 2、手工焊：不受外形尺寸制约，由于其表面开槽，不如机焊的好看。但其焊接强度要比机焊大。

## 钢格板的重量和面积计算 Steel Grating Calculation Of Weight And Area

- 1、钢格板的重量,经包边和热浸镀锌表面处理,重量会增加。对一般工业平台,负载扁钢间距为30mm的钢格板增重12%;负载扁钢间距为40mm的钢格板增重约14%;负载扁钢间距为60mm的钢格板增重约16%。
- 2、按用户规定尺寸加工的,按实际尺寸计算(含开孔和切口)。
- 3、提供图纸代为用户排版设计的,按图纸上总外围尺寸计算(含开孔和切口)。
- 4、异形钢格板LxW不扣除切口部分。

- 1、The weight of gratings varies after end welded and hot galvanizing process. For normal industrial platform using 30mm pitch bearing bars, the weight will increase 12%; 14% for 40mm pitch bearing bars and 16% for 60mm pitch bearing bars.
- 2、For those gratings processed according to the size applied by customer, calculation will be based on the actual area (including cutout and tap)
- 3、For those gratings processed according to customer's drawing, calculation will be based on the total outside size (including cutout and gap)
- 4、For unusual size of gratings cutouts shall not deduct from the length and width.



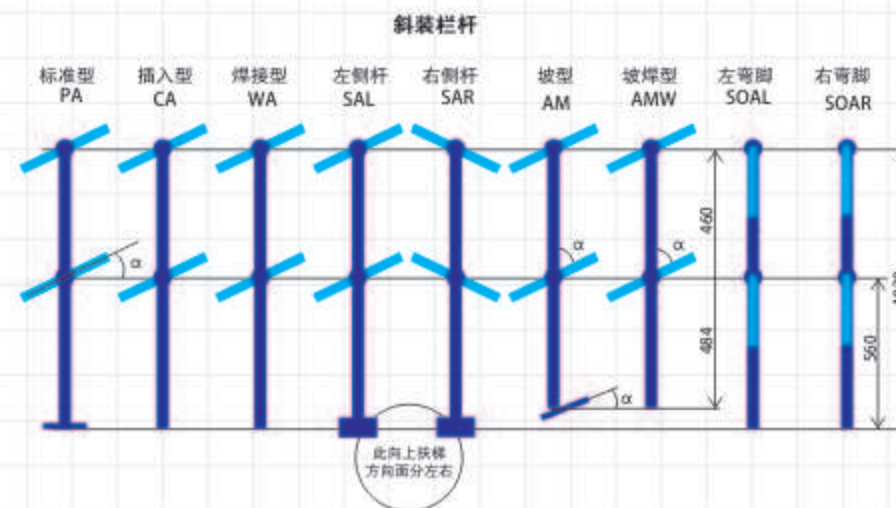
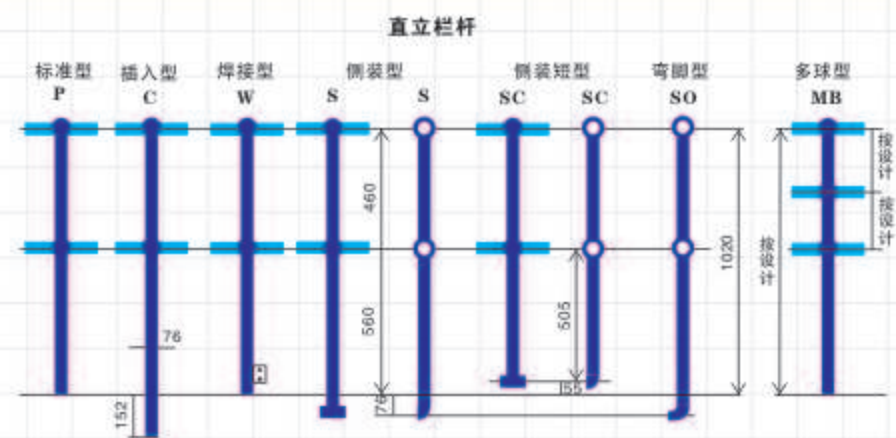
## 球接栏杆 Rail with connected balls

专业球接栏杆生产线制造。美观新颖，安装方便，坚固耐用。碳钢表面热浸镀锌免维护。球接栏杆广泛用于污水处理、自来水、园林、市政道路、矿山、电力、石化、机械、造船、公路、铁路、桥梁、码头等工业及民用建筑。球接栏杆产品符合国际标准：英国 BS6399 和 BS6180、澳大利亚 1650-1985 等，以及中国标准 4053-83。不锈钢表面抛光，符合环保要求。

It is produced by a professional producing line, galvanized, conforming to the standards of British BS6399, BS6180 and Australian 1650-1985 as well as Chinese 4053-83.

**CS/1P/2-KG**

表面处理: G热镀锌, 其它略写  
 脚踏板: 无脚踏板略写  
 横杆数: 1单杆, 2双杆, 3三杆  
 立柱形式: 见图示  
 立柱数: 1单立柱, 2双立柱  
 规格: S标准型, E经济型  
 材质: C碳钢, S不锈钢





## ☒ 双边丝护栏网系列 Double Wire Mesh Fence Series



双边丝护栏网的主要特点是结构简练、美观经济、实用、便于运输、安装方便，对地形适应能力强，环保回收价值高，已被工厂、建筑工地、大棚蔬菜、养殖、城市道路、花草隔离带所采用。

This series of protective mesh are simple in structure, beautiful and practical, easy to transport, convenient to install, and suitable for any topography.



## ☒ 双圈护栏网系列 Double circle Fence Series



双圈护栏网的主要特点是造型美观、结构新颖、强度高、钢性好，给人一种柔和舒畅的感觉。适用于小区园林、花园苗圃、学校操场、游乐场、停车场、机关办公大楼等场所。

Merit of double circle fence: Aesthetically pleasing, novel structure, high intensity, good steel, it is feels gentle ease. Mainly used in community garden, parking lot, garden nursery, playground, organs buildings and so on.



## ☒ 框架护栏网系列 Frame fence series



框架护栏网主要用于高速公路、铁路、机场、车站、服务区、保税区、露天仓储场、港口等领域的围栏。其产品特点具有美化环境、坚固耐用、不易褪色、不变形等优点。

Frame fence netting is mainly used in highways, railways, airport, station, service area, protecting tax area, harbor, fields, etc. The fastness is enduring, hard to fade and transform.



## ☒ 荷兰网系列 Holland Wire Mesh series



荷兰网的主要特点是结构简单，网孔周密（50mm×50mm，50mm×100mm），安装简便、快捷、波纹美观、回收再利用率高、网面不易破损，适合公园改建时临时的保护，花园场地，公路中间的花草隔离带等场所。

It is widely used in industry, agriculture, municipal, traffic as the equipment for fencing, decorating, defending etc. With the characteristic of good anti-corrosion, age resistance, beautiful shape, easy and quick install.



## 桃型柱护栏系列 Peach-shaped Fence Series



桃型柱护栏网是一种新型产品，现主要流行于美、日、韩等发达国家及国内较大城市，具有美观大方、不受地形起伏限制及安装方便等特点。

Peach-shaped fence is a new product popular in many developed countries, including the U.S.A, Japan and South Korea and in large cities of China. It is beautiful, suitable for any topography, and convenient in installation etc.



## 机场护栏网系列 Airports Fence Series



本产品是专为机场设计的新型围界产品，采用高强度低碳钢丝强力焊接，立柱为矩形钢及高强度圆管，顶部加焊V型支架，大大增强了围网的抗冲击力，顶部在增加刀片刺丝后又很快的增强了安全防护性能。国内外大型机场已广泛采用此种产品，并得到了极大的认可。

It is a new fencing product, specially designed for airports. With high strength welded low carbon wire, rectangular steel or high strength pipe as pillars and welded V-shaped support at the top, the fencing has strong impact-proof, with razor and barbed wire on the top, the fencing has good protective function. The products are widely used at large airports both at home and abroad, and are well received by customers.



## 监狱防护网系列 Prison Protection Fence Series

螺旋型交叉式刀片刺网系在两条刀片刺网之间,以不锈钢片和镀锌钢片强力夹扣,展开后呈交叉状,既美观又实用。  
单圈式刀片刺网无需用夹子,按照其展开的自然形式进行安装。

Spiral razor cross-barbed mesh is made of two razors with stainless steel plate and galvanized steel plate in between as a powerful clamp buckle, which takes the shape of cross when spread.

Single-ring razor barbed mesh, available without a clamp, is installed according to its natural form of spreading.



## 欧式护栏网系列 European Style Fence Series



欧式护栏网采用Q235低碳冷拔钢丝、冷拔低碳钢丝、低碳钢丝为原料编织焊接折弯而成,规格:1.8m高,2.5m宽。并且进行相应的防腐处理:电镀锌、热镀锌、喷塑、浸塑和不锈钢丝等。欧式护栏网广泛用于铁路封闭、生活区围栏、场区围网、开发区作为隔离栅使用。

European style fence adopts the Q235 low-carbon cold drawing steel wire, cold drawing low-carbon steel wire, low-carbon steel wire as the raw materials and is woven, welded, and bent into shape. Specification: 1.8m high, 2.5m wide. And is dealt with accordingly anti-corrosion treatment: electronic galvanized, hot galvanized, spray, dip and stainless steel. The European style mesh is widely used in railway closed living area fence, fence factory site, and is used as isolating fence.



## ☒ 锌钢护栏网系列 Zine Steel Fence Series



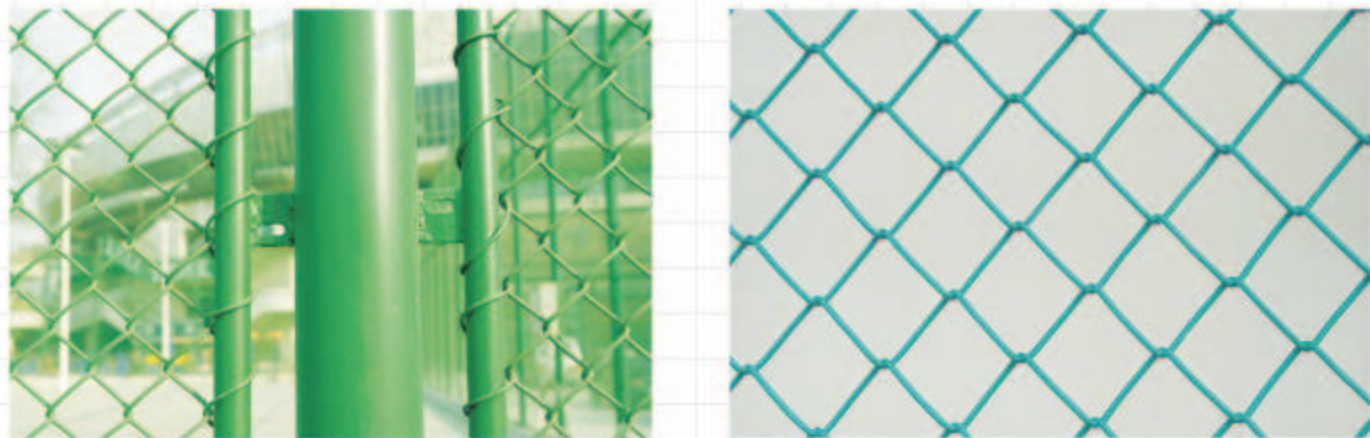
## ☒ 高速护栏板系列 Highway Guardraic Plate Series

高速公路波形护栏板是半刚性护栏的主要形式，它是一种以波纹状钢护栏板相互拼接并由立柱支撑的连续结构。它利用土基、立柱、横梁的变形来吸收碰撞能量，并迫使失控车辆改变方向，回复到正常的行驶方向，防止车辆冲出路外，以保护车辆和乘客，减少事故造成的损失。

高速公路波形护栏板钢柔相兼，具有较强的吸收碰撞能量的能力，具有较好的视线诱导功能，能与道路线形相协调，外形美观，可在小半径弯道上使用，损坏处容易更换。



## ☒ 球场护栏网系列 Stadium Fence Series



球场护栏网的主要特点是弹性好、张力大、耐冲击、视觉明亮、网面整体效果突出，网面的设计给人一种球场的感觉，特别适于足球场、学校操场、体育场、机关活动场所的安装。

Merit of stadium fence: good elasticity and tension, impact resistance, the whole of the mesh surface give people a feeling of sport. Particularly applicable to stadium, school playground, places of organs and other places.



## ☒ 电焊网片 Welded Mesh Panel

电焊网片:分为不锈钢网片、铁丝网片、地热网、墙体网、地板采暖网、护栏网。

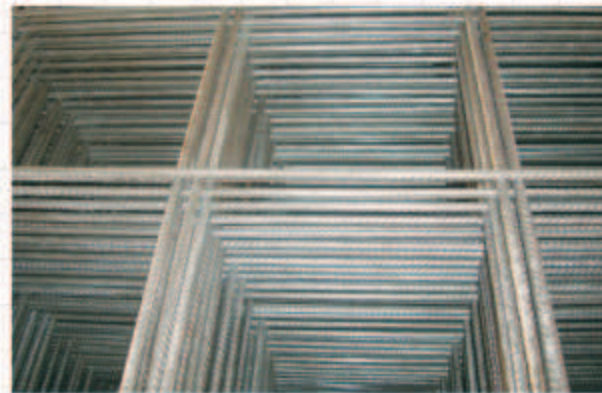
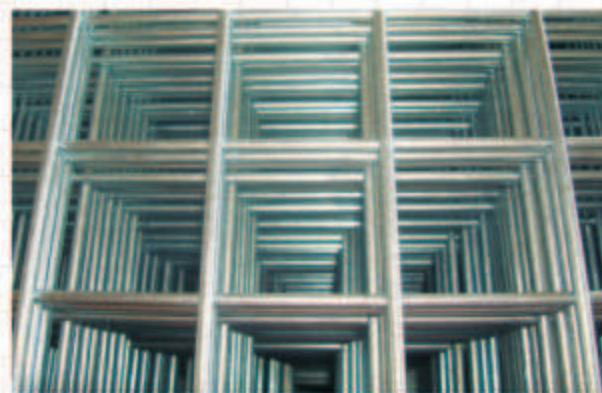
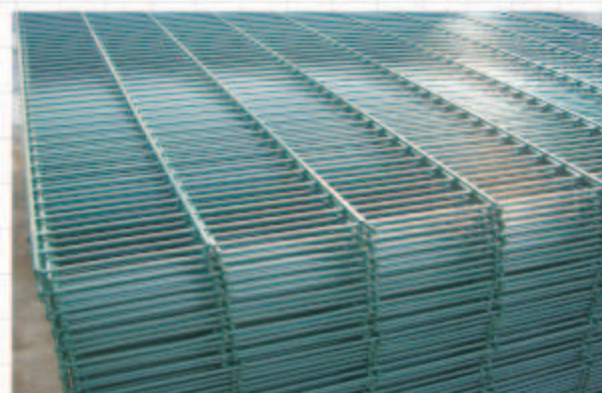
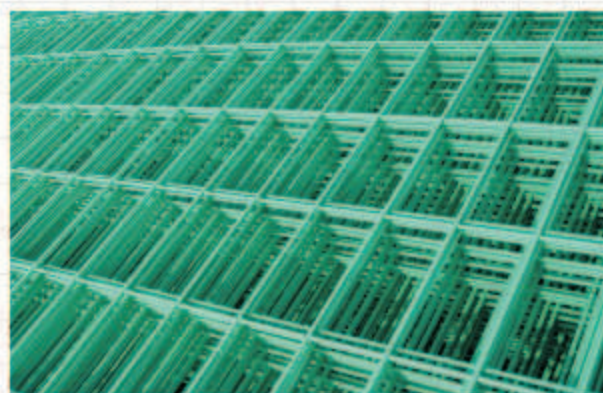
材质:优质低碳钢丝、表面处理有热镀锌、电镀锌、PVC、涂塑。

用途:本品广泛用于矿山、商业、交通、建筑业、装饰、水利、港口、仓库等各类工程建设中的钢筋混凝土结构用网等。

Welded wire mesh panel: stainless steel wire mesh panel, iron mesh panel, geothermy net, wall cloth wire mesh, floor heating mesh wire mesh fence.

Materials: high quality low carbon steel wire, hot galvanized, electrol galvanized, PVC, plastic coated.

Usages: widely used in mine, commerce, transportation, building, decoration, watering, port, defence, warehouse, etc, and all the projects of concrete.





# 冲孔网 Preforated Metal Sheet

材料：低碳钢板、不锈钢板、铝板、铝镁合金板。

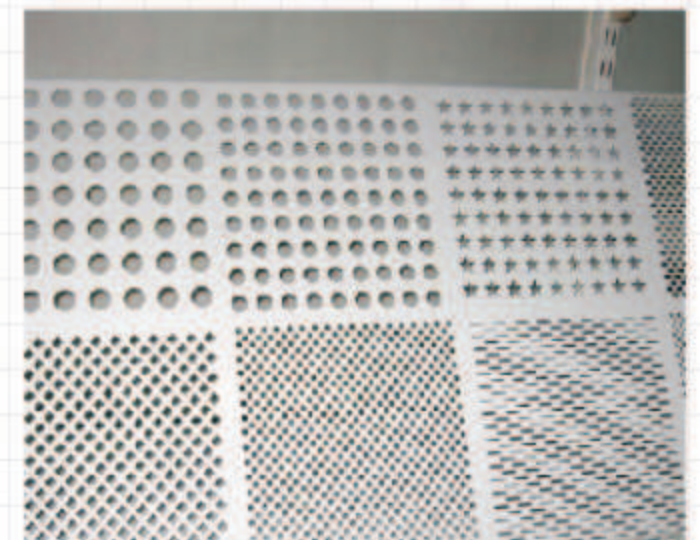
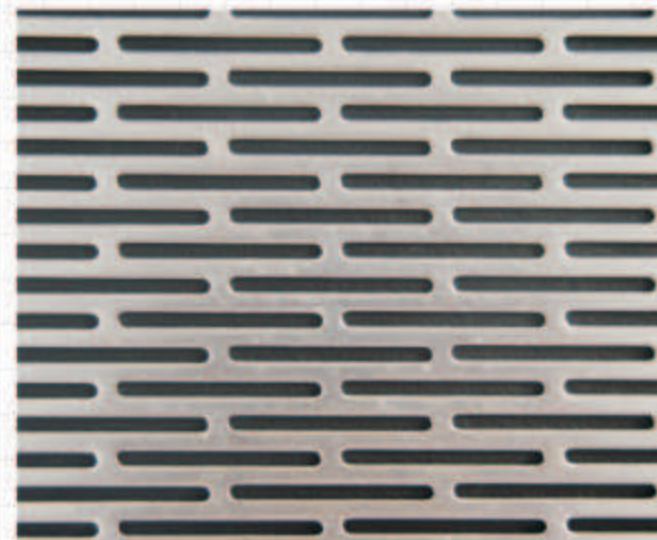
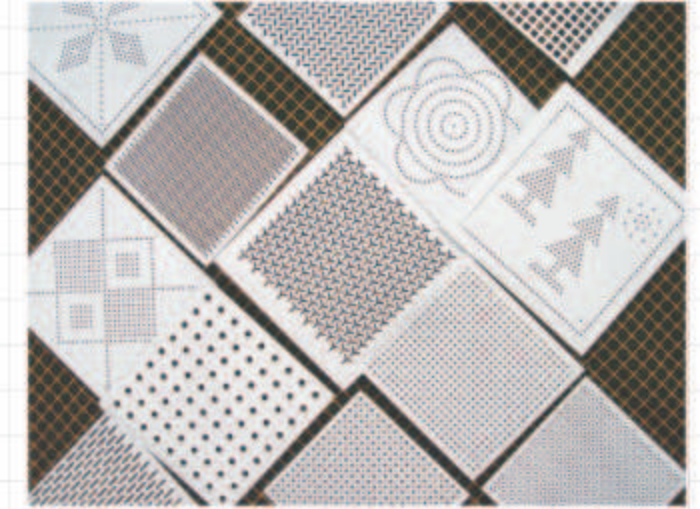
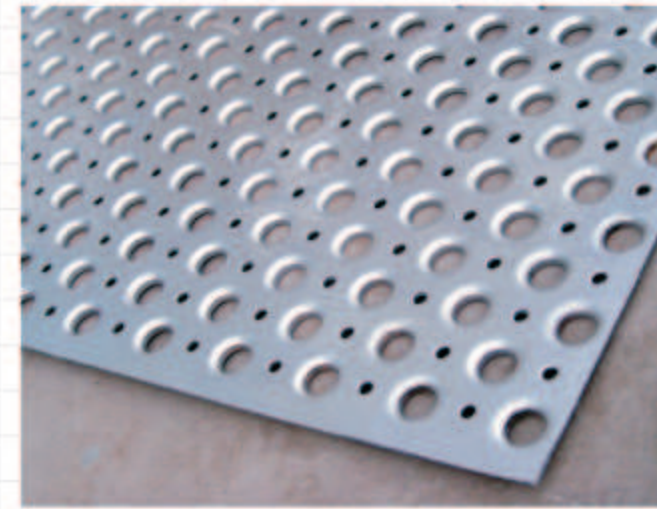
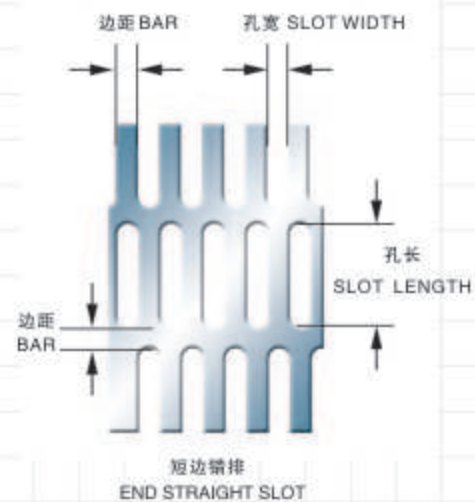
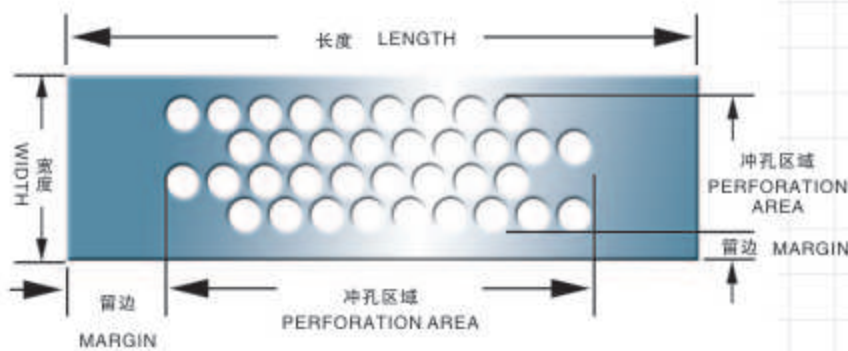
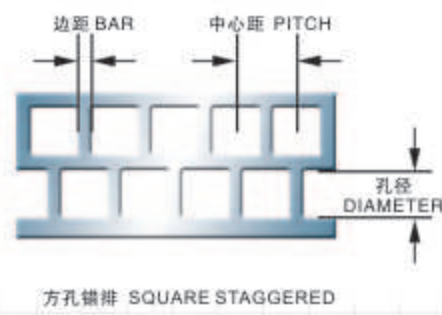
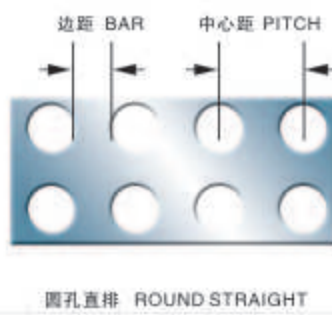
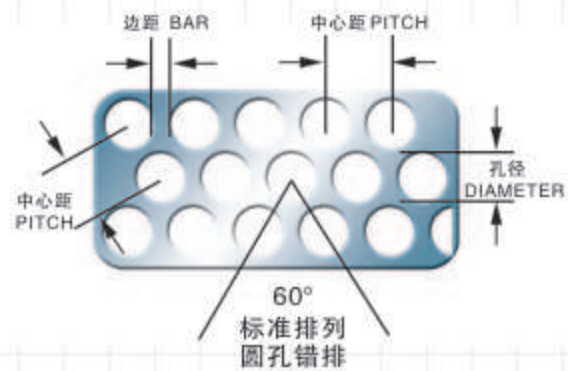
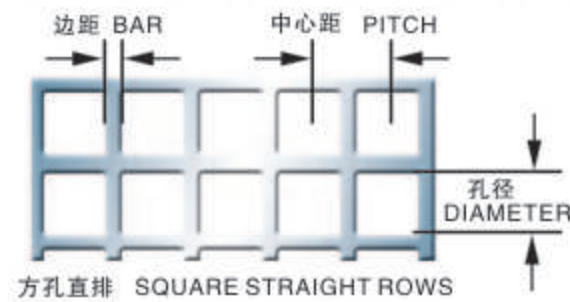
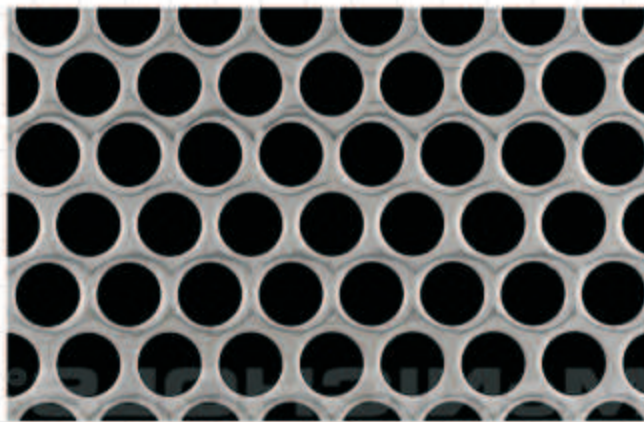
特点：冲压而成；其性能耐弯曲、抗老化、不易生锈，用途广泛；网面平整、光滑、坚固耐用。

用途：用于汽车内燃机过滤、矿山、医药、粮食分样筛选、室内隔音、粮库通风等。

Materials: Low carbon steel plate, stainless steel plate, aluminum plate, Al-Mg alloy plate.

characteristics: It is punched to meshes, winding-resisting, aging-resisting, corrosion-resisting, the top of meshes is smooth, it is strong and durable.

Uses: Used in filter of automobiles internal-combustion engine, sieving of mine, medicine, grain, sound insulation of room, ventilate of grain depot, etc.



防风网应用范围相当广泛，在农业上防风网用于提供对农作物的微气候；在沙化比较严重的地区，用于减少沙石堆积；在环境保护中，防风网能减少散料物体装卸和堆入过程中的逸散。露天存放的各种储煤场、矿石、石灰堆放等散流物料在遇到三级以上大风天气时经常粉尘满天，给周围大气环境造成严重污染。我国目前主要采取控制堆入场扬尘的技术措施是：表面覆盖、喷淋技术和挡风抑尘技术。前两种措施均需反复投资，并且效果不佳，喷淋技术还存在冬季结壳问题。而挡风抑尘技术可有效解决上述问题。不仅效果良好，外观漂亮，且一次投资多年受益，是目前解决散流物料扬尘污染的最佳措施。



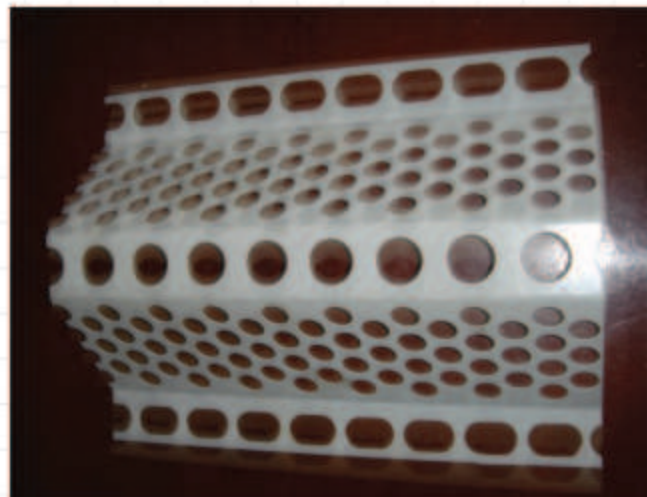
## 防风抑尘网产品分类

**类型：单峰型(单体)。**

成型宽度在250mm--500mm之间，峰高50mm--100mm，长度在4米之内都可以加工。板材厚度0.5mm--1.5mm，在以上范围之内，可以根据客户的图纸进行加工制作。

材质：钢板、镀锌板、彩涂钢板、不锈钢板。

表面处理：静电粉末喷涂。

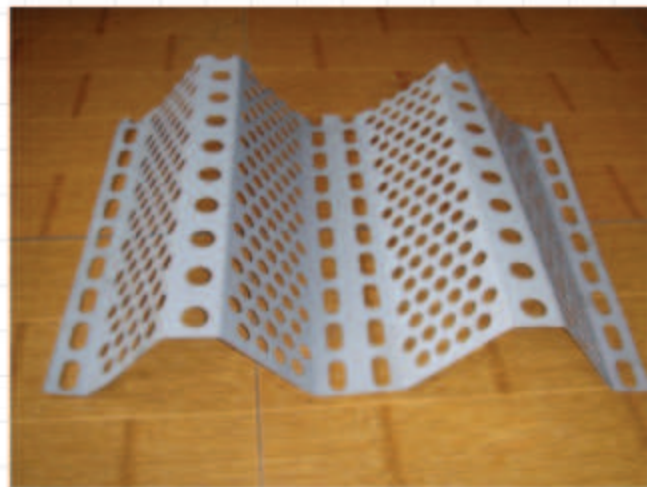


**类型：双峰型(双体)。**

成型宽度在400mm--600mm之间，峰高50mm--100mm，长度在10米之内都可以加工。板材厚度0.5mm--1.0mm，在以上范围之内，可以根据客户的图纸进行加工制作。

材质：钢板、镀锌板、彩涂钢板、不锈钢板。

表面处理：静电粉末喷涂。



**类型：三峰型(三联体)。**

成型宽度在810mm，峰高80mm。长度在10米之内都可以进行加工。板材厚度0.5mm--1.0mm，在这个范围之内，都可以根据客户的图纸进行加工制作。

材质：钢板、镀锌板、彩涂钢板、不锈钢板。

表面处理：静电粉末喷涂。

三联体的这种规格有着前边两种规格所不能比拟的优势，安装简便，施工效率高，安装后墙体整体性能好，抗风能力强。能大幅度降低施工成本，为施工单位在市场提高竞争力。在宽度不合适的情况下，我公司可以根据您的钢构尺寸为您专门制作，单体、双体防风抑尘网，便于组合。



# 勾花网 Chain Link Netting

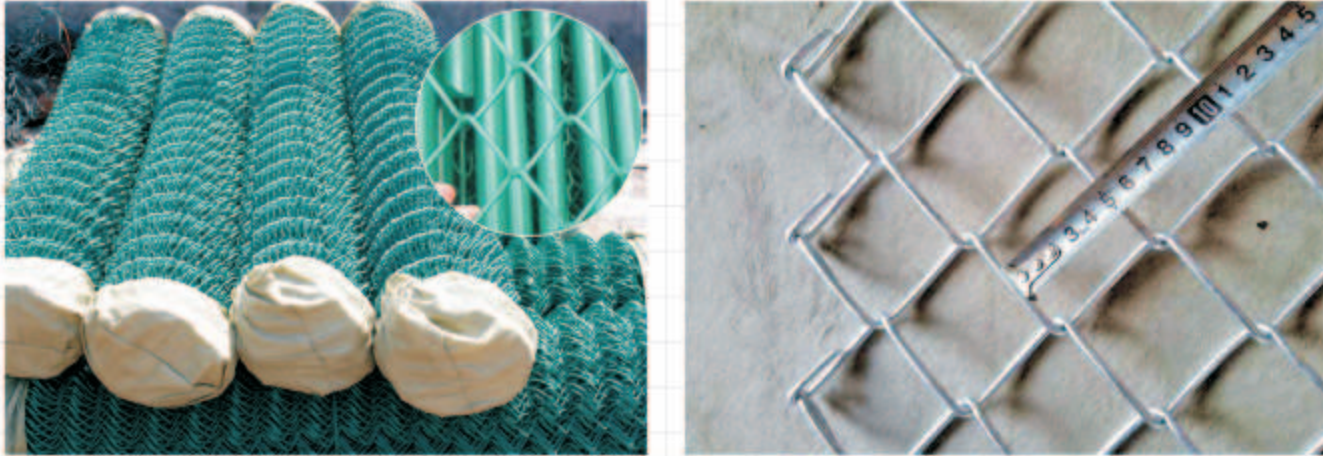
材料：优质低碳钢丝、不锈钢丝、铝合金丝。

编织及特点：勾编而成；编织简洁、美观实用。

用途：用于球场、公园、河道、高速公路、铁路、机场、建筑、住宅的安全防护等。

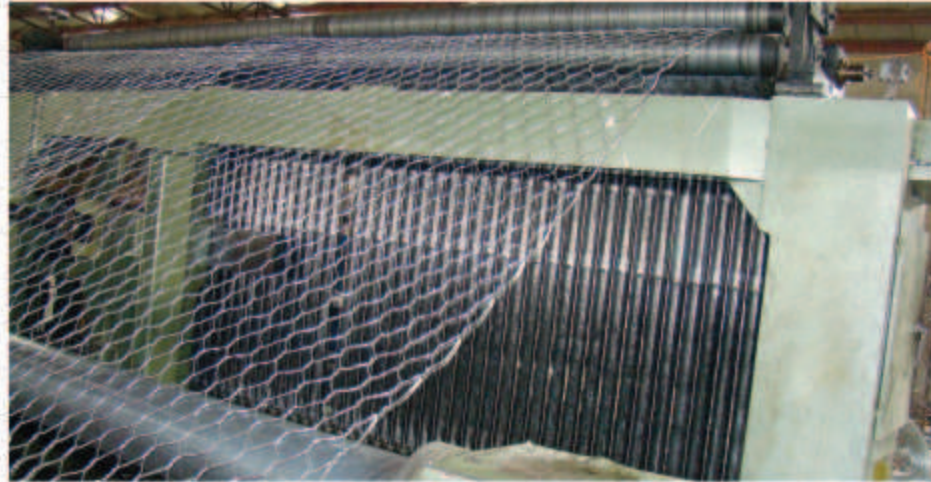
Materials: High quality low carbon steel wire, stainless steel wire, Al-alloy wire. Weaving and characteristics: Link and weaving, the weaving is simple, artistic and practical.

Uses: Widly used as fences for playground, gradens, highway, railway, airport, building, residence, etc.

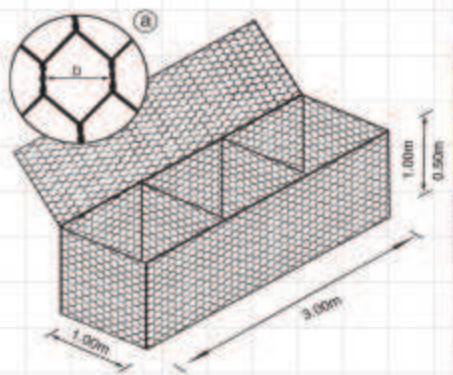


包塑丝、镀锌丝石笼网可用做水库截流用的乱石网箱，同时也是优良的建筑用材料，广泛用于高速公路、铁路护栏网、绿化栏网、山坡网箱、抗洪网箱、护堤栏网、动物园栏网、井巷防护网等，并可提高河床边坡的稳固性，保护河床防止冲刷，在邻近环境水源的保持上，有控制水流量，防止水资源流失的作用以及生态环境的保护与治理。

Plastic coated wire, galvanized wire stone cage wire mesh, is not only used as the stone net cage, but also as the high quality construction materials. Widely used in highways, railways, greening fence hillside net cage, flood fighting net cage, revet fence, zoo fence, well and alley fence etc. Meanwhile it can improve the stability of hillside, preventing the riverbed from washing out. On the maintenance of neighborhood environment and waterhead, it also have the effect of controlling the flowing quantity, preventing the water source from flowing, protecting and governing the zoology environment.



Mesh sizes 网孔	Number of Diaphragm 隔片数	Approximate Dimensions and Volumes 网箱尺寸				Tolerance 公差范围	Colour Code 颜色	Wire diameter 丝径 (mm)
		Length 长 (m)	Width 宽 (m)	Height 高 (m)	Capacity 立方 (m³)			
80 x 100	1	2.00	1.00	0.30	0.60	Length 长 ± 5% Width 宽 ± 5% Height 高 ± 5%	颜色可 以选择 Blue 蓝 Red 红 Green 绿 Black 黑	Heavily galvanized or galvanized coated wire 2.00, 2.20, 2.40, 2.70, 3.00 OR PVC coated on Heavily Galvanized or Galvanized coated wire 2.0/3.0, 2.2/3.2, 2.4/3.4, 2.7/3.7, 2.0/4.0
	1	2.00	1.00	0.50	1.00			
	1	2.00	1.00	1.00	2.00			
80 x 120	2	3.00	1.00	0.30	0.90			
	2	3.00	1.00	0.50	1.50			
100 x 120	2	3.00	1.00	1.00	3.00			
120 x 150	3	4.00	1.00	0.30	1.20			
	3	4.00	1.00	0.50	2.00			
	3	4.00	1.00	1.00	4.00			
	1	2.00	0.50	0.50	0.50			
	2	3.00	0.50	0.50	0.75			



电焊石笼网是用螺旋形绑丝把焊接成型后的前后面板、底板和隔板组装好后压缩，和网盖一起打包。折叠绑扎好的所有石笼产品，都是一个独立的个体。电焊石笼网在欧洲，美洲应用广泛，主要用来公园景观造型，建筑外墙，商务大楼的外包。

Welded gabion made of high quality low carbon steel wire, in accord with BS1052:1986 standard. Front and rear panels are connected by wire spiral, floor and partitions assembled after compression. Folded gabion is individual. Wire spirals are delivered separately in box to isolate with humid environment.

Advantage: Welded Gabion holds their shape better, do not bulge out when filled stones in. More strength and rigidity makes them popular in Europe and America.



# 刺绳系列 Barbed Wire Series

## 普通刺绳 Barbed Wire

材料：优质低碳钢丝（镀锌、涂塑、喷塑）PVC；有蓝、绿、黄等颜色。

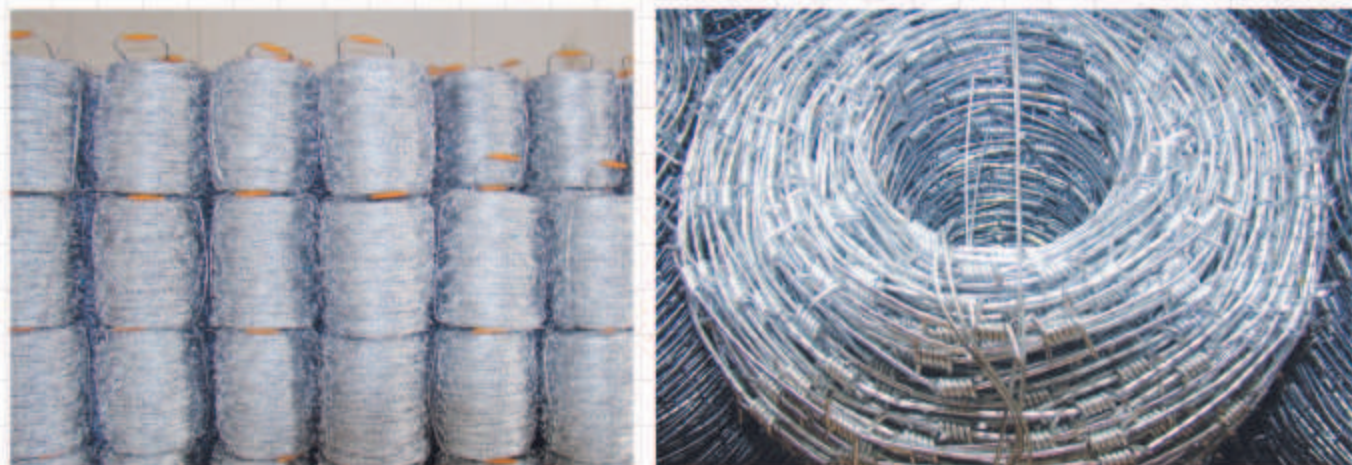
编织及特点：拧编而成；牢固、美观。

用途：用于草场边界、铁路高速公路的隔离防护等。

Materials: high quality low carbon steel wire, PVC wire. The color have blue, green, yellow etc.

Weaving and characteristics: twisting and weaving.

Uses: used in protecting grass boundary, railway, highway, etc.



丝号 Gauge of Strand and Barb in B. W. G	刺距 Approximate Length per Coil in Meter			
	Barbs Spacing 3"	Barbs Spacing 4"	Barbs Spacing 5"	Barbs Spacing 6"
12 x 12	6.0617	6.7590	7.2700	7.6376
12 x 14	7.3335	7.8051	8.3015	8.5741
12-1/2 x 12-1/2	6.9223	7.7190	8.3022	8.7221
14-1/2 x 14	8.1096	8.814	9.2242	9.5620
13 x 13	7.9808	8.899	9.5721	10.0553
13 x 14	8.8448	9.6899	10.2923	10.7146
13-1/2 x 14	9.6079	10.6134	11.4705	11.8553
14 x 14	10.4569	11.6890	12.5423	13.1752
14-1/2 x 14-1/2	11.9875	13.3671	14.3781	15.1034
15 x 15	13.8927	15.4942	16.6666	17.5070
15-1/2 x 15-1/2	15.3491	17.1144	18.4060	19.3886

## 刀片刺绳 Razor Wire

钢丝为芯丝，刀片包裹在芯丝上，产品具有极强的防护能力和优秀的恐吓能力，安装方便，寿命长。它分为直线型、交叉型、直线盘绕型、交叉盘绕型和十字交叉型。

用途：用于边界隔离、军事设施、监狱、别墅区、军事基地、飞机场等。

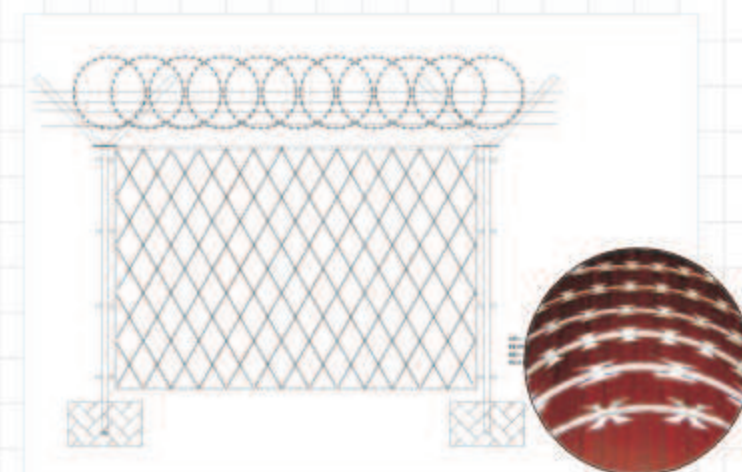
Technology: Wire as the core wire, the blade wrapped in a good punch on the core wire, once made.

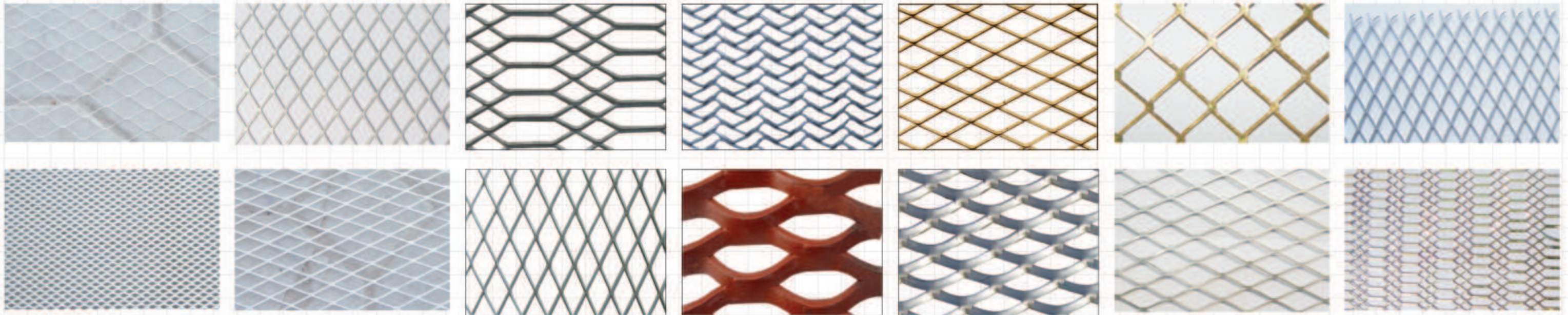
Character : strong protection and excellent intimidation ability ,easy to install , long life.

Shape: Linear, cross-type, linear coil-type, cross-coil type.

Usages: To border quarantine, military facilities, prisons, villa area, military bases, airports. Etc

Barbed Tape Wire Specification				
Outside Diameter	No. of Loops	Standard Length per Coil	Type	Notes
450mm	33	7-8M	CBT-60.65	Single coil
500mm	56	12-13M	CBT-60.65	Single coil
700mm	56	13-14M	CBT-60.65	Single coil
960mm	56	14-15M	CBT-60.65	Single coil
450mm	56	8-9M (3 CLIPS)	BTO-10.12.18.22.28.30	Cross type
500mm	56	9-10M (3 CLIPS)	BTO-10.12.18.22.28.30	Cross type
600mm	56	10-11M (3 CLIPS)	BTO-10.12.18.22.28.30	Cross type
600mm	56	8-10M (5 CLIPS)	BTO-10.12.18.22.28.30	Cross type
700mm	56	10-12M (5 CLIPS)	BTO-10.12.18.22.28.30	Cross type
800mm	56	11-13M (5 CLIPS)	BTO-10.12.18.22.28.30	Cross type
900mm	56	12-14M (5 CLIPS)	BTO-10.12.18.22.28.30	Cross type
960mm	56	13-15M (5 CLIPS)	BTO-10.12.18.22.28.30	Cross type
980mm	56	14-16M (5 CLIPS)	BTO-10.12.18.22.28.30	Cross type





材料:铝板、薄低碳钢板、不锈钢板、铜板、镍板、钛板、银板。

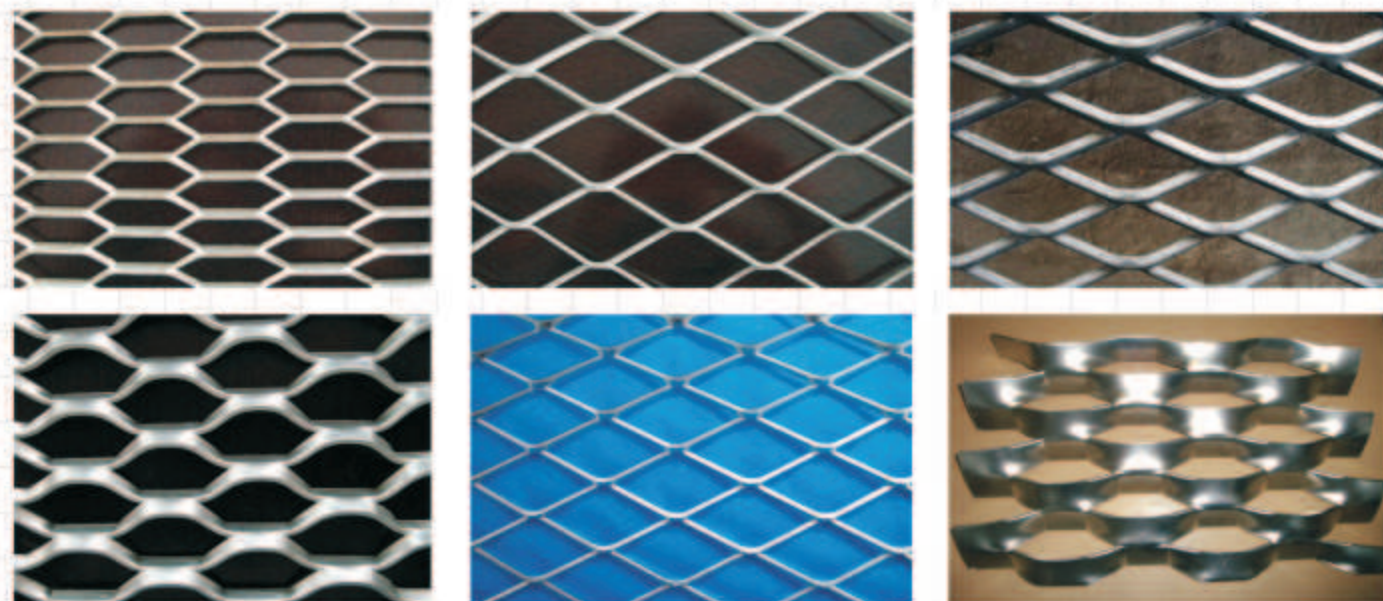
编织及特点: 冲压而成; 分为: 铝板网、小钢板网、钢板网、不锈钢板网; 按网孔: 菱形、方形、圆孔、三角形、鱼鳞孔。坚固耐用、美观大方。

用途: 广泛用于公路、铁路、民用建筑、水利等建筑、各种机械、电器、窗户的防护及水产养殖等。

Materials: Aluminium plate. Thin low carbon steel plate. Stainless steel plate. AL-MG alloy plate. Copper plate. Nickel plate.

Weaving and Characteristic: It is punched to mesh, including: aluminium plate mesh and stainless steel plate mesh, steel plate mesh and stainless steel plate mesh; according to the hole shape, it is divided into diamond, square, round, triangle, scale hole, it is strong and wear-resisting, artistic.

Uses: Used widely in road, railway, civil building, water conservancy's build; the protecting of all kinds of machines, electrical equipment, window and aquatic product's breed.



### 钢板网规格示意图

短节距 - 短的菱形孔对角线 SWD - short way of diamond

长节距 - 长的菱形孔对角线 LWD - long way of diamond

节点 - 两根丝梗的连接处 BOND - where two strands intersect

丝梗宽度或板条宽度 - 制作一根丝梗所用金属板的长度

STRAND WIDTH - length of the metal used to produce one strand

丝梗厚度或板条厚度 - 板材厚度

STRAND THICKNESS - gauge thickness

网宽 - 长节距方向距离

LWM (width) - mesh sheet size, the distance of lwd direction

网长 - 短节距方向距离

SWM(length) - mesh sheet size, the distance of swd direction

